



# vitrastone

NATURAL STONE CLADDING SYSTEM / MANUFACTURED BY FAIRVIEW



## PRODUCT INTRODUCTION



**FAIRVIEW**

DEFINING ARCHITECTURE SINCE 1963

[WWW.FV.COM.AU](http://WWW.FV.COM.AU)

# ABOUT



vitra stone

NATURAL STONE CLADDING SYSTEM / MANUFACTURED BY FAIRVIEW

## PRODUCT DESCRIPTION

Vitrastone is a fabricated stone panel wall cladding system utilising a composite panel made by laminating a natural stone layer to an aluminium honeycomb substrate with aviation grade epoxies. Vitrastone is fabricated and then attached to the wall with a series of aluminium extrusions.

Vitrastone can feature a large range of natural stone finishes, including granite, marble, limestone and sandstone. The natural stone composite panels are suitable for interior and exterior use, being highly weatherproof and suitable for high impact areas.



## ADVANTAGES

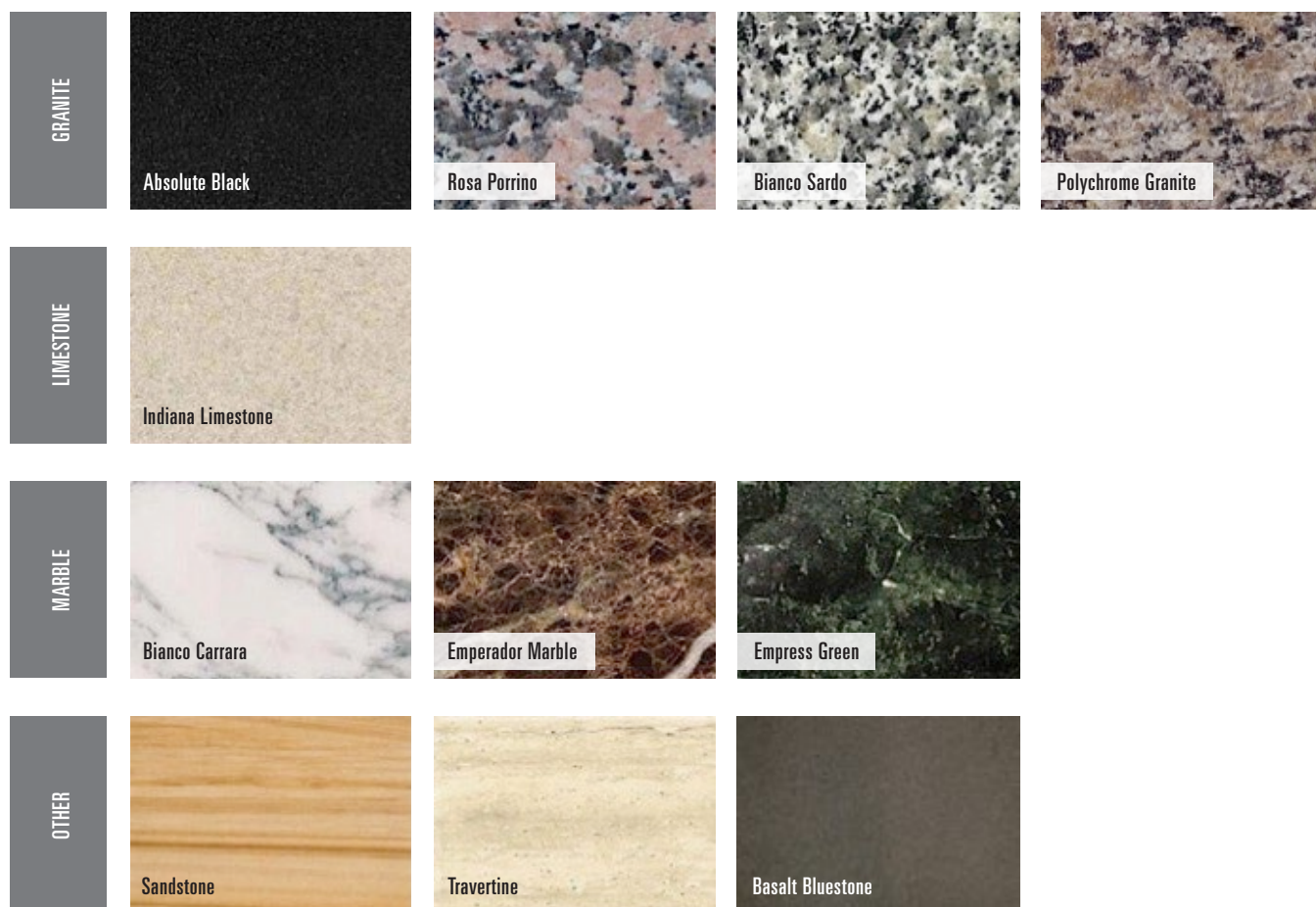
Why use Vitrastone over traditional solid (dimensional) stone?

- **Lightweight** — Vitrastone is only 1/5 of the weight of its equivalent in dimensional stone. This means that the product is much easier to handle and to ship, lessening damages, and improving onsite efficiency and safety.
- **Simple installation** — Vitrastone offers far improved attachment over traditional solid stone. The solid stone anchoring system exposes the weakest properties of the stone, whereas the fixing systems offered with Vitrastone are rapid and align with common systems already used in Australia.
- **Flexibility** — Vitrastone panels, using stone as a veneer over the honeycomb core are much more flexible than dimensional stone. As a result the panels are much less prone to fracturing and cracking and better able to withstand building movement and extreme weather events.
- **Stability** — The thin stone found on Vitrastone panels lacks the torsional force of the thicker dimensional stone. This means the lightweight Vitrastone system doesn't experience the stability failure that occurs in dimensional stone

## FINISH OPTIONS

Fairview offer a wide range of igneous and non-igneous stone in the Vitrastone panels. When used for exterior applications, the stone can accommodate custom finishes and patterns, taking advantage of the different textures that can present. There are various combinations of three dimensional patterns and carvings available, as well as traditional polished, honed, sandblasted, and other custom textures to make a custom facade feature.

Below is a selection of commonly chosen colours. If you have any particular finish or colouring in mind, please contact our sales team to discuss further.



Disclaimer: Please note stone is a natural product. As a result, no two pieces are identical and may vary in markings, colour and texture. In some stones it is common to find spots, fossils or shelly formations, pit holes, open texture streaks, iron spots, and grain formation changes.

# TECHNICAL



vitrastone

NATURAL STONE CLADDING SYSTEM / MANUFACTURED BY FAIRVIEW

## MANUFACTURING QUALITY

---

A dedication to the total fulfillment of our client's and customer's expectations is reflected by a complete quality control system, beginning at the point of specification and continuing through to delivery of the guaranteed products. All activities are carried out in a manner which:

- Uses the framework of ISO9000 Quality Standards to verify the quality of our systems
- Ensures that our products and services are of the highest standards
- Creates continuous improvements to our product through the application of the best quality practices.

## WARRANTY

---

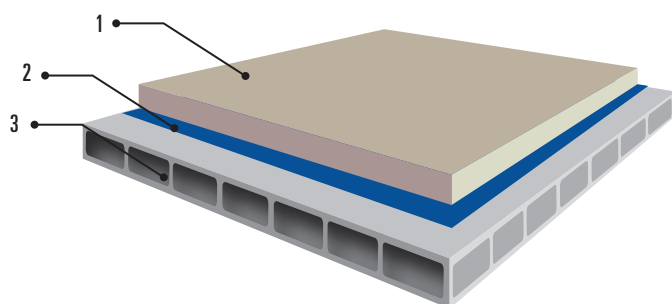
The standard warranty is 10 years.





## PROPERTIES

### TYPICAL COMPOSITION



1. Natural Stone
2. Aviation Grade Epoxy
3. Vitracore Honeycomb Substrate

This combination results in a high impact strength, high flexural strength, lighter weight and easier to install panel.

### SKIN & CORE

Face Skin - 5mm Natural Stone

Core - 10mm Vitracore Honeycomb Panel

### DIMENSIONS

#### STANDARD PANEL DIMENSION

2400mm x 1200mm

Panels can be made smaller or larger on request.

Note: Not all sizes are available with all stone types.

### WEIGHT

THICKNESS	WEIGHT (kg/m <sup>2</sup> )
15mm	22 (approx — depending on stone type)

# TECHNICAL DATA

NO.	ITEM	STANDARD	TESTED VALUE	RESULT
1	Flat Bonding Strength	Average $\geq 1.0$ MPa; Minimum $\geq 0.6$ MPa	Average 1.31 MPa; Minimum 0.88 MPa	Pass
2	Flat Tensile Strength	$\geq 0.8$ MPa	0.91 MPa	Pass
3	Flat Tensile Modulus	$\geq 30$ MPa	70.7 MPa	Pass
4	Flat Shearing Strength	$\geq 0.5$ MPa	0.54 MPa	Pass
5	Flat Shearing Modulus	$\geq 4.0$ MPa	6.43 MPa	Pass
6	Bending Strength	$\geq 8.0$ MPa	41.0 MPa	Pass
7	Bending Rigidity	$\geq 1.0 \times 10^9$ N.mm <sup>2</sup>	$2.86 \times 10^9$ N.mm <sup>2</sup>	Pass
8	Shearing Rigidity	$\geq 1.0 \times 10^5$ N	$4.40 \times 10^5$ N	Pass
9	Climbing Drum Peel Strength	Average $\geq 50$ N.mm/mm; Minimum $\geq 40$ N.mm/mm	Average 9.1N.mm/mm; Minimum 42.4NN.mm/mm	Pass
10	Fasten Fitter Loading Capacity	$\geq 3.2$ kN	3.2 kN	Pass



# FIXING



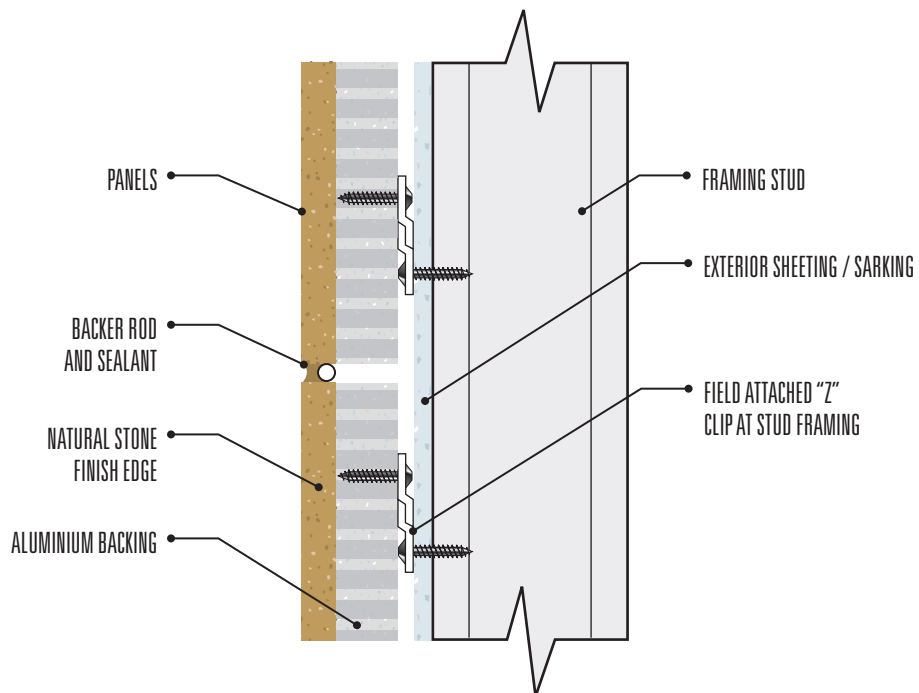
vitrastone

NATURAL STONE CLADDING SYSTEM / MANUFACTURED BY FAIRVIEW

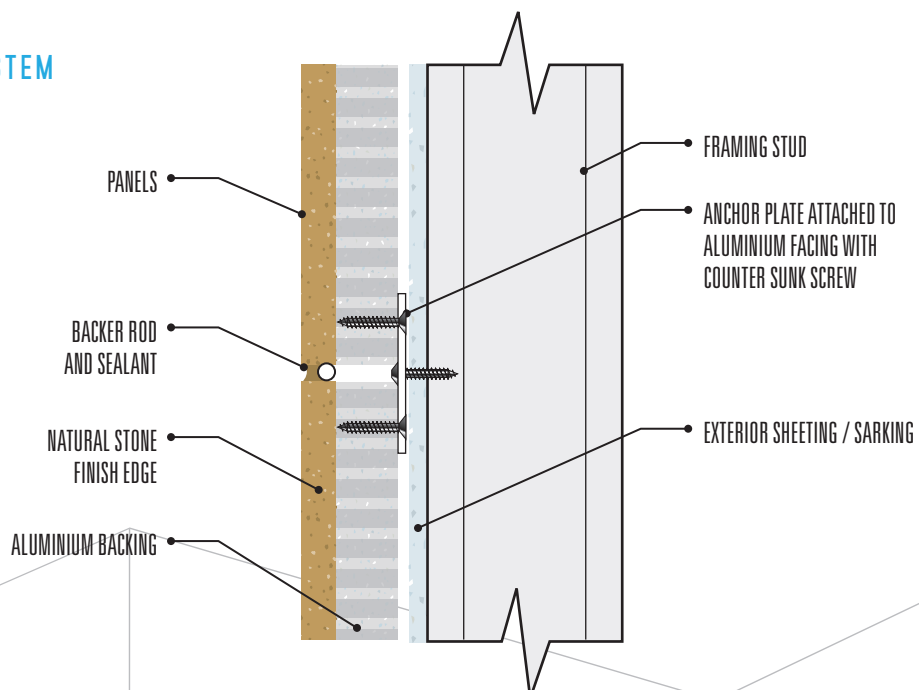
## FIXING SYSTEM

Below are typical details of the two most common installation systems

### Z CLIP SYSTEM



### ANCHOR PLATE SYSTEM





# vitrastone

NATURAL STONE CLADDING SYSTEM / MANUFACTURED BY FAIRVIEW

## FAIRVIEW PRODUCT RANGE:



**vitranamel**

VITREOUS ENAMEL PANEL / MANUFACTURED BY FAIRVIEW



**ceramapanel**

COMPRESSED FIBRE CEMENT FACADE / MANUFACTURED BY FAIRVIEW



**vitrabond**

ALUMINIUM COMPOSITE PANEL / MANUFACTURED BY FAIRVIEW



**vitrafix**

VITRABOND FIXING ACCESSORIES / MANUFACTURED BY FAIRVIEW



**vitradual**

NON-COMBUSTIBLE CASSETTE CLADDING / MANUFACTURED BY FAIRVIEW



**vitraART**

CUSTOM GRAPHIC CLADDING / DEVELOPED BY FAIRVIEW



INSULATED SANDWICH PANEL / SUPPLIED BY FAIRVIEW



NON-COMBUSTIBLE FAÇADE PANEL / SUPPLIED BY FAIRVIEW



TERRACOTTA FAÇADE TILES / SUPPLIED BY FAIRVIEW



HIGH DENSITY FIBRE CEMENT / SUPPLIED BY FAIRVIEW



# FAIRVIEW

DEFINING ARCHITECTURE SINCE 1963

## AUSTRALASIA

P / +61 2 6352 2355  
helpdesk@fv.com.au

## NORTH AMERICA

P / +1 860 242 2711  
helpdesk.na@fairviewarch.com

## UNITED KINGDOM

P / +01278 428 245  
helpdesk.uk@fairviewarch.com



[WWW.FV.COM.AU](http://WWW.FV.COM.AU)