



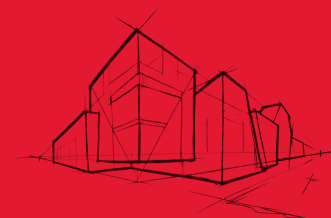
ROCKWOOL Safe 'n' Silent Pro

Fire, Thermal and Acoustic Insulation for
Interior Partition Walls and Ceilings

ROCKWOOL Safe 'n' Silent Pro is a range of stone wool insulation used for interior applications where superior thermal and acoustical performances as well as fire resistance are required.

It has excellent acoustical dampening properties and provides an easy friction fit into walls and ceilings. It is also non-combustible – it also does not develop toxic smoke nor promote flame spread, even when directly exposed to fire. The superior performances of ROCKWOOL Safe 'n' Silent Pro ensure the comfort and safety of the inhabitants of the interior space.

The product is available in a wide range of sizes to suit most interior application requirements in Australia and New Zealand.



Superior Acoustic Properties

Enhance with unique fiber structure to absorb sound and reduces noise traveling from one room to another, improving occupant comfort.

ROCKWOOL

Safe 'n' Silent Pro

Technical Data Sheet
Interior Partition & Ceiling Insulation
19th July 2024

Technical Parameters

Product	ROCKWOOL Safe 'n' Silent Pro330	ROCKWOOL Safe 'n' Silent Pro350	ROCKWOOL Safe 'n' Silent Pro370	ROCKWOOL Safe 'n' Silent Pro380	Test Standard
Density	40kg/m ³	60kg/m ³	80kg/m ³	100kg/m ³	N/A
Reaction to Fire	Non-combustible Euroclass A1	Non-combustible Euroclass A1	Non-combustible Euroclass A1	Non-combustible Euroclass A1	AS 1530.1 EN 13501-1
Fire Hazard Properties	Ignitibility: 0 Spread of flame: 0 Heat evolved: 0 Smoke developed: 0-1	Ignitibility: 0 Spread of flame: 0 Heat evolved: 0 Smoke developed: 0-1	Ignitibility: 0 Spread of flame: 0 Heat evolved: 0 Smoke developed: 0-1	Ignitibility: 0 Spread of flame: 0 Heat evolved: 0 Smoke developed: 0-1	AS 1530.3
Melting Point	1000°C	1000°C	1000°C	1000°C	ASTM E794
Thermal Conductivity at mean 23°C	0.037 W/mK	0.035 W/mK	0.034 W/mK	0.034 W/mK	ASTM C518
Water Absorption (partial immersion)	1 kg/m ²	0.5 kg/m ²	0.5 kg/m ²	0.5 kg/m ²	BS EN ISO 29767
Water Vapor Absorption	Less than 0.04 Vol %	Less than 0.04 Vol %	Less than 0.04 Vol %	Less than 0.04 Vol %	ASTM C1104/ 1104M
Water Repellent	98 %	98 %	98 %	98 %	GB/T 10299

Sound Absorption Coefficient (50mm Thickness)

Product	125Hz	250Hz	500Hz	1000Hz	2000Hz	4000Hz	NRC	α _w
Safe 'n' Silent Pro330	0.2	0.6	1.0	1.0	1.0	1.0	1.0	0.9
Safe 'n' Silent Pro350	0.2	0.7	1.0	1.0	1.0	1.0	1.0	1.0
Safe 'n' Silent Pro370	0.2	0.75	1.0	1.0	1.0	1.0	1.0	1.0
Safe 'n' Silent Pro380	0.2	0.85	1.0	1.0	1.0	1.0	1.0	1.0

Application

ROCKWOOL Safe 'n' Silent Pro is designed and manufactured to achieve excellent acoustic insulation performance in all types of drywall partition configurations. It is recommended to be used for drywall partition applications in hospitals, cinemas, schools, offices, residential and industrial buildings.

Compliance with the Australia NCC

These range of ROCKWOOL products when properly specified and installed, demonstrate compliance with the following requirements:

- Thermal**
Complies with AS/NZS 4859.1 and meets the requirements of NCC through adherence to NCC 2022 Volume 1 Section J4D3 (1), NCC 2019 Volume 1 Section J1.2(a), NCC 2019 Volume 2 Section 3.12.1.1(a) and state-prescribed variations.
- Fire Hazard Properties**
Adheres to NCC 2019 Volume 1 Specification C1.10 Clause 7 and NCC 2022 Specification 7 Clause S7C7 for insulation materials. When tested to AS1530.3, these products conforms to the "Spread of Flame" and "Smoke Developed" requirements outlined in NCC 2022 Specification 7 Clause S7C7 and NCC 2019 Volume 1 Specification C1.10 Clause 7.
- Non-Combustibility**
Complies with the non-combustibility standards of NCC 2022 Volume 1 C2D2 and NCC 2019 Volume 1 C1.9(a) or satisfies the testing criteria outlined in AS 1530.1.

For more information at www.rockwool.com/anz

ROCKWOOL

Safe 'n' Silent Pro

Technical Data Sheet
Interior Partition & Ceiling Insulation
19th July 2024

Facings

ROCKWOOL Safe 'n' Silent series is available as plain products and additionally with options of foil facing or glass tissue on one side or two-sided.

Packaging and Storage

ROCKWOOL Safe 'n' Silent is shrink-wrapped in polyethylene sheets for ease of handling, transportation and storage. Products should be stored in doors or under waterproof covering.

Health & Safety

ROCKWOOL stone wool products are manufactured from FBS-1 stone wool. FBS-1 stone wool is safe to use and the fibre component of these products is listed by Safe Work Australia as Man-made Vitreous Fibre (stone wool) of low bio persistence as specified under Note Q in the Australian Hazardous Substances Information System and in the Australian Approved Criteria.

Product Specification

ROCKWOOL Safe 'n' Silent Pro330

R-Value m²K/W	Thickness (mm)	Width (mm)	Length (mm)	# Pieces per pack	Area per pack (m²)
0.70	25	600	1200	12	8.64
1.35	50	600	1200	8	5.76
1.75	64	600	1200	5	3.60
2.05	75	600	1200	4	2.88
2.45	90	600	1200	4	2.88
2.70	100	600	1200	3	2.16

ROCKWOOL Safe 'n' Silent Pro350

R-Value m²K/W	Thickness (mm)	Width (mm)	Length (mm)	# Pieces per pack	Area per pack (m²)
0.70	25	600	1200	12	8.64
1.45	50	600	1200	6	4.32
1.85	64	600	1200	5	3.60
2.15	75	600	1200	4	2.88
2.55	90	600	1200	3	2.88
2.85	100	600	1200	3	2.16

ROCKWOOL Safe 'n' Silent Pro370

R-Value m²K/W	Thickness (mm)	Width (mm)	Length (mm)	# Pieces per pack	Area per pack (m²)
0.75	25	600	1200	12	8.64
1.45	50	600	1200	6	4.32
1.90	64	600	1200	5	3.60
2.20	75	600	1200	4	2.88
2.65	90	600	1200	3	2.88
2.95	100	600	1200	3	2.16

ROCKWOOL Safe 'n' Silent Pro380

R-Value m²K/W	Thickness (mm)	Width (mm)	Length (mm)	# Pieces per pack	Area per pack (m²)
0.75	25	600	1200	12	8.64
1.45	50	600	1200	6	4.32
1.90	64	600	1200	5	3.60
2.20	75	600	1200	4	2.88
2.65	90	600	1200	3	2.88
2.95	100	600	1200	3	2.16



Distributed by:



FAIRVIEW

18-20 Donald St, Lithg NSW 2790, Australia.
T: 1800 007 175
E: helpdesk@fv.com.au
www.fv.com.au

Disclaimer: The information contained in this data sheet is only applicable for Australia and is believed to be correct at the date of publication and is subject to change after the date of printing. This data sheet was designed for general information purpose only. It's contents should not be construed as representing all performance for these insulation materials. You should not act or rely on any of the information contained herein without seeking professional advice. We make no representations as to accuracy, completeness, correctness, suitability or validity of any information in this document and will not be liable for any errors, omissions, or delays in this information or any losses, injuries or damages arising from it use. All information is provided on a as-is basis.

ROCKWOOL Australia Pty Ltd

Level 12, 90 Arthur Street,
North Sydney, NSW 2060, Australia.
info.anz@rockwool.com

ROCKWOOL Malaysia Sdn Bhd

Lot 4, Solok Waja 1, Bukit Raja Industrial Park,
41050 Klang, Selangor, Malaysia.
T (+60) 3 3346 8200
info.my@rockwool.com

For more information at www.rockwool.com/anz