

ceramapanel
9mm PRE-FINISHED COMPRESSED FIBRE CEMENT



C O L O U R C H A R T



Cermapanel is a versatile 9mm compressed fibre cement façade panel, finished in the ultra-durable Inflonito or Envirothane 9000. Whether to make a statement with colour, search for quality or satisfy durability requirements, Cermapanel meets the needs of the most demanding projects.

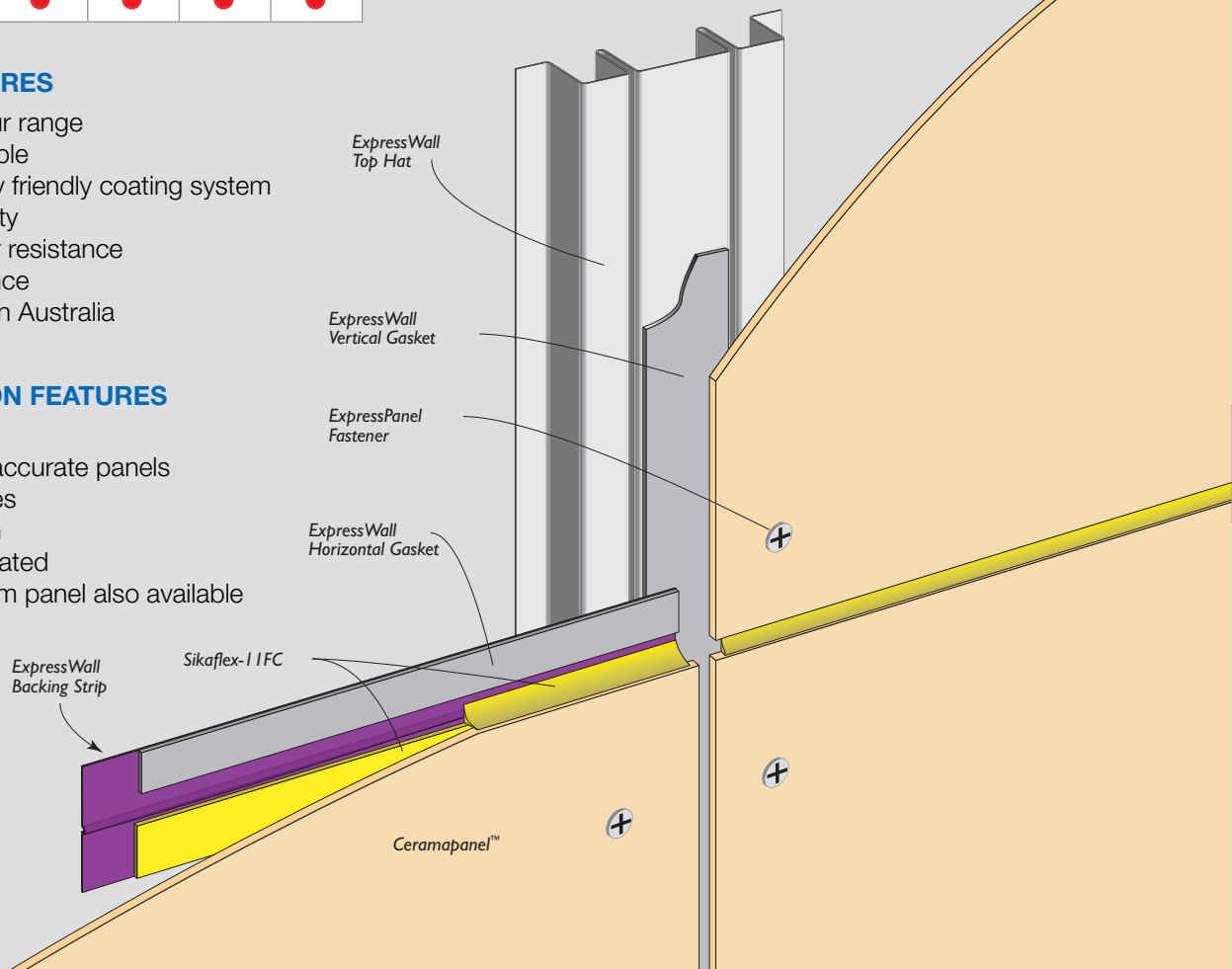
STANDARD SIZES					
Width (mm)	Length (mm)				
	1800	2100	2400	2700	3000
900	●		●		●
1200	●	●	●	●	●

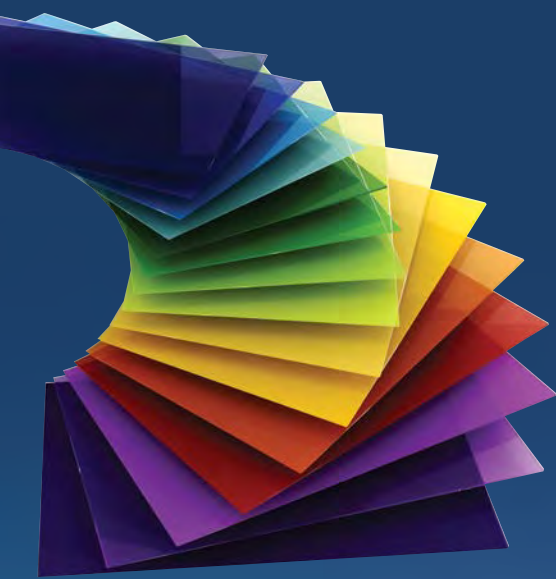
DESIGN FEATURES

- Unlimited colour range
- Non-Combustible
- Environmentally friendly coating system
- Robust durability
- Tested weather resistance
- Low maintenance
- Manufactured in Australia

CONSTRUCTION FEATURES

- Cost effective
- Dimensionally accurate panels
- Quick lead times
- Fast installation
- Easily prefabricated
- 6mm and 12mm panel also available



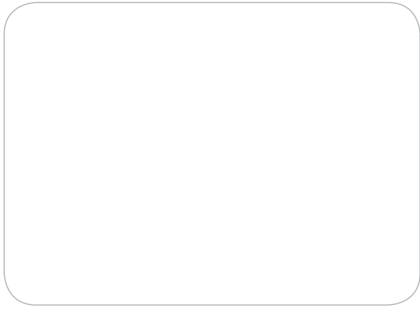


Unlimited Colour

Ceramapanel offers a truly unlimited colour range. In addition to the colours displayed here, choose from a Pantone or RAL colour, Dulux, A & I coatings, and more.



Solid Colours



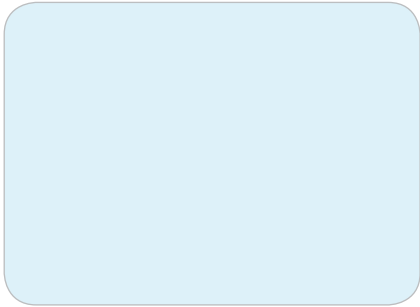
ICE WHITE (Z500)



GREY ZONE (X036)



CHARRED FOREST (M167)



TULLE BLUE (F016)



NORTH SKY (M018)



DEEP WATER (M017)



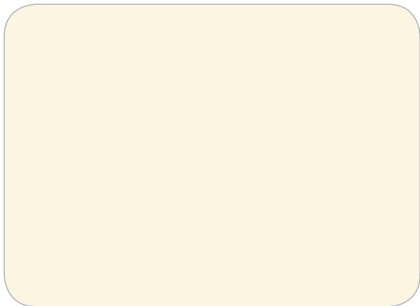
FANTA (L096)



AUTUMN RUST (M129)



BRIGHT RED (R200)



IMPALA (G098)



EARTH (K155)



RICH YELLOW (L079)



BERRY (Y105)

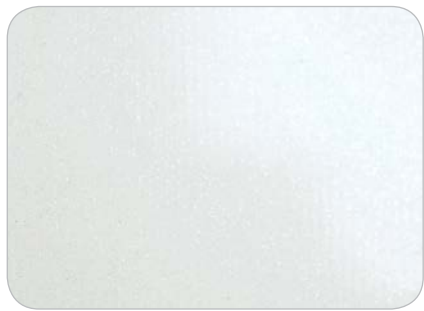


FRESH PINE (S049)

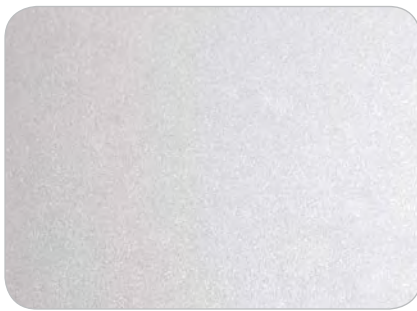


MILLERS GREEN (M034)

Metallic Colours



WHITE PERLOCOAT (S879701)



SANDBLASTED SILVER (S1189003)



CHAMPAGNE (S1189001)



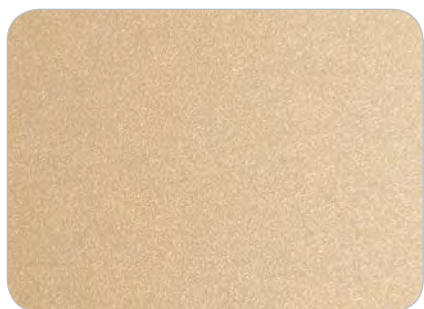
SANDBLASTED ALUMINIUM (S1189004)



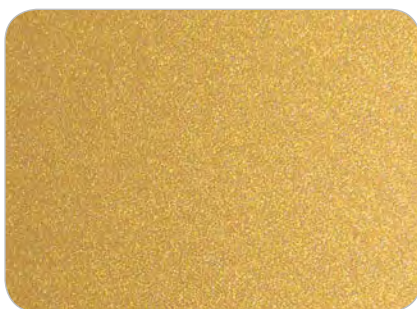
LIGHT SAGE (S1186805)



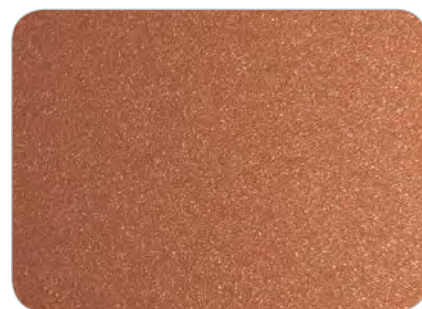
MEDIUM BRONZE (S1189005)



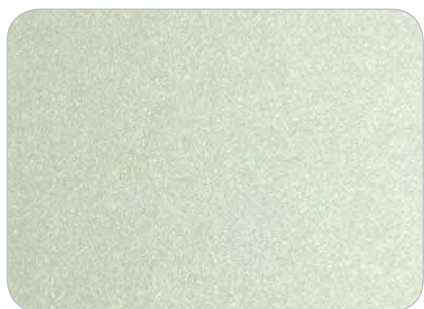
LIGHTER COPPER (S1189602)



EMPERORS GOLD (S1189702)



TANGERINE (S1186706)



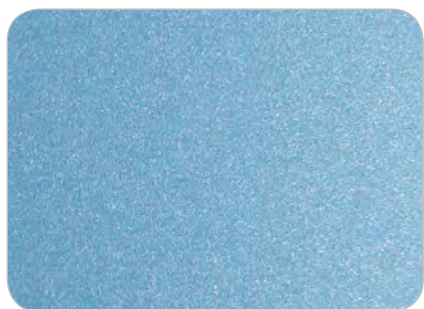
TROPICANA (S1263406)



ROYAL GREEN (S1189701)



MINESHAFT (S1189002)



ATLANTIS BLUE (S1263401)



COBALT BLUE (S1186703)



DEEP PERIWINKLE (S1263404)



MANUFACTURED & SUPPLIED BY:



AUSTRALASIA HEAD OFFICE:

P: +61 2 6352 2355

NORTH AMERICAN OFFICE:

P: +1 860 242 2711

UNITED KINGDOM:

P: 0844 800 7131

E: helpdesk@fairviewarch.com

www.fairviewarchitectural.com.au