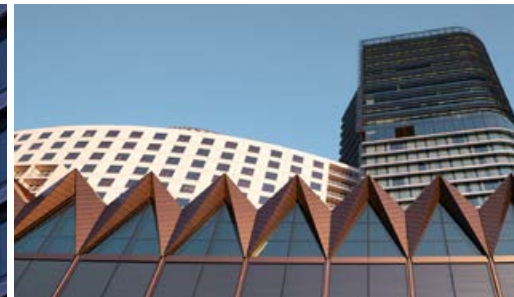


# AUSTRALASIA PROJECT NEWS

**EQUITONE**  
Fibre cement facade materials

HIGH DENSITY FIBRE CEMENT / SUPPLIED BY FAIRVIEW



## HYATT REGENCY

PROJECT: HYATT REGENCY  
LOCATION: SUSSEX ST, SYDNEY NSW  
ARCHITECT: KRISTINA STOFFERS, COX ARCHITECTURE  
BUILDER: BROOKFIELD MULTIPLEX  
INSTALLER: STANE INDUSTRIES  
PRODUCT: EQUITONE TECTIVA, 4500m<sup>2</sup>  
COLOUR: TE10

The 5-star Hyatt Regency Sydney on the fringe of Darling Harbour, formerly Four Points by Sheraton, underwent a vast redevelopment which included refurbishment of the hotel and construction of a new convention space and 25 level tower. Adorning the recognisable curved façade is Equitone Tectiva, a through-coloured fibre cement cladding, which was installed by Stane Industries.

The highly expressive fibre cement structure of the Tectiva range has a clear shield that provides a waterproofing as well as an enhancement to the natural finish of the product. During the manufacturing process each panel develops a unique texture, colour and surface. Equitone is deemed non-combustible façade solution, with longevity exceeding 50 years, making this product the ideal choice for this iconic hotel.

*Equitone's Tectiva range offers high durability, low weight and fast, easy installation.*

  
**FAIRVIEW**  
DEFINING ARCHITECTURE SINCE 1968

AUSTRALIA / NEW ZEALAND / NORTH AMERICA / UNITED KINGDOM  
SALES ENQUIRIES 1800 007 175 HELPDESK.AU@FV.COM.AU

TO VIEW MORE INFORMATION ON FAIRVIEW'S PRODUCTS, PLEASE VISIT: [WWW.FV.COM.AU](http://WWW.FV.COM.AU).  
SAMPLES OF ALL OUR PRODUCTS ARE AVAILABLE ON REQUEST AND SENT OUT FREE OF CHARGE.

[WWW.FV.COM.AU](http://WWW.FV.COM.AU)



**EQUITONE**

Fibre cement facade materials

---

HIGH DENSITY FIBRE CEMENT / SUPPLIED BY FAIRVIEW